

11 GLYNN PLAZA
Brunswick, GA 31520

For Sale or Lease →

Brittany Megrath, CCIM
Principal | 702.858.7792
bmegrath@msquarecommercial.com



M Square Commercial
10450 W Cheyenne Ave, Suite 130
Las Vegas, NV 89129
msquarecommercial.com



AVAILABLE

1.47 Acres - Vacant Land

RATES

Call for Pricing

PROPERTY DETAILS

- > Inline parcel, ±8,460 SF, adjacent to Walmart Neighborhood Market
- > Located on high-volume traffic avenue
- > Monument sign available
- > Less than a mile from the College of Coastal Georgia (3,127 Students)
- > Nearby Retailers: McDonalds, Walgreens, Big Lots, Dunkin', Sonic, Walmart Neighborhood Market, Bailey's Gym & many more

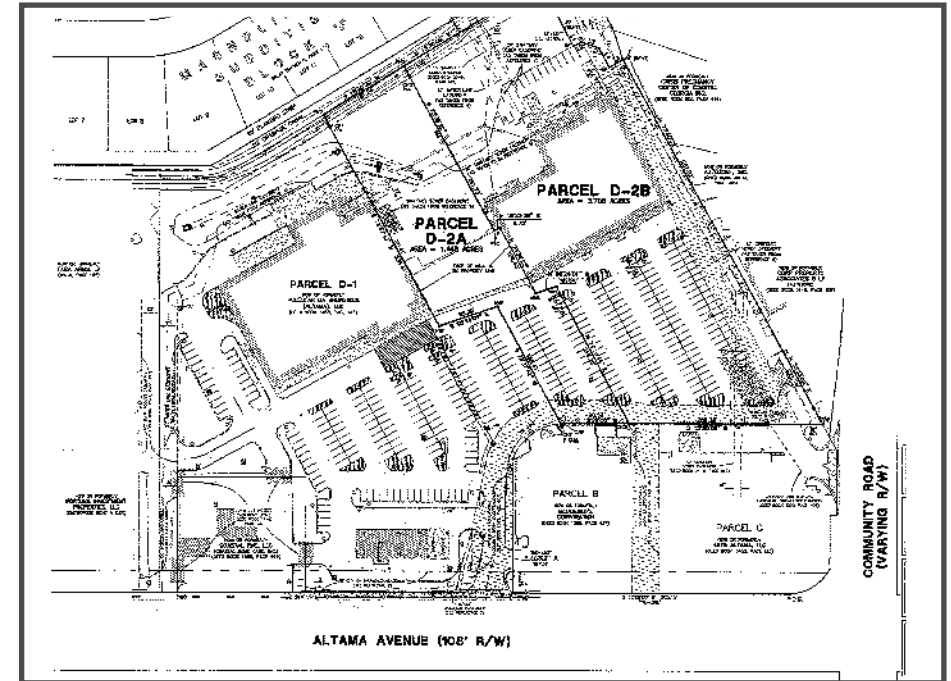
TRAFFIC COUNTS

Altama Ave 20,700 VPD

Community Rd (GA-303): 13,600 VPD

Golden Isles Pkwy (GA-25): 21,500 VPD

SITE PLAN



2023 DEMOGRAPHICS

	1-Mile	3-Mile	5-Mile
Population	4,569	30,274	45,821
Daytime Pop	6,539	34,871	48,813
2028 Pop	4,641	30,331	45,669
Median Age	37.0	37.7	38.5
Households	1,956	11,815	18,052
AVG HH Income	\$58,842	\$59,823	\$66,914



